



BALANCE™

Stress & Dehydration Aid Nutritional/Metabolic Supplement

INDICATIONS

BALANCE Stress & Dehydration Aid is a nutritional/metabolic supplement formulated to balance systemic electrolytes needed to maintain hydration. It acts as a buffering agent to correct blood pH when stress challenges occur due to environmental heat or handling. BALANCE Stress & Dehydration Aid is formulated using electrolytes and buffering agents and does not use sugar as filler.

Use BALANCE Stress & Dehydration Aid prior to a stressful heat or handling. The balancing and buffering effect will give your livestock:



- Increased water consumption
- Reduction of body temperature in a high heat environment
- Reduced panting of the heat-stressed animals, thus reducing the pH of their blood and maintaining a healthy and more responsive metabolic system. This will help meat quality in slaughter animals
- A quicker rebound after stress from excessive heat, handling or performing
- Less shrinkage in processed animals and a better cut out



AVAILABILITY

40 lb. - Reorder No: 21019
780 gm. - Reorder No: 21020



MIXING INSTRUCTIONS

780 GRAM FOIL PACKET

INDICATIONS: BALANCE Stress & Dehydration Aid helps animals which are experiencing metabolic imbalances and dehydration due to stress events.

BALANCE Stress & Dehydration Aid is a nutritional/metabolic supplement that can be administered through the drinking water or added to the feed of livestock. BALANCE Stress & Dehydration Aid was specially engineered for use in animals that are anticipated to be or are experiencing dehydration and metabolic stress from events including extended transport, high heat index periods, environmental extremes, disease stress, market transport, and other periods where feed and water intake may be reduced.

INGREDIENTS:

Sodium..... Min. 27% Zinc Min. 300 ppm
Potassium... Min. 10% Plant Protein. . Max. 1%

STORAGE: Store at a room temperature below 30° C (86° F). BALANCE Stress & Dehydration Aid is not harmed by freezing. Close container between uses to prevent clumping.

DIRECTIONS FOR USE: Begin treating livestock one day prior to and during the entire stress period.

Water Administration:

- **Water medicator:** Administer BALANCE Stress & Dehydration Aid at 1 packet per 5 gallons of stock solution metered at 1 ounce per gallon (1:128) of drinking water.
- **Water tank:** Administer BALANCE Stress & Dehydration Aid at 1 packet per 640 gallons of water (each packet treats approximately 64,000 pounds of livestock).

Feed Administration:

Administer BALANCE Stress & Dehydration Aid by adding 1 gram per 3 lbs. of complete feed or 1 packet (780 grams) per ton of complete feed. (This will equate to 1.2 grams per 100 lbs. body weight per day.)

40 LB. BUCKET WITH SCOOP

INDICATIONS: BALANCE Stress & Dehydration Aid helps animals which are experiencing metabolic imbalances and dehydration due to stress events.

BALANCE Stress & Dehydration Aid is a nutritional/metabolic supplement that can be administered through the drinking water or added to the feed of livestock and poultry. BALANCE Stress & Dehydration Aid was specially engineered for use in animals that are anticipated to be or are experiencing dehydration and metabolic stress from events including extended transport, high heat index periods, environmental extremes, disease stress, market transport, and other periods where feed and water intake may be reduced.

INGREDIENTS:

Sodium. Min. 27% Zinc. Min. 300 ppm
Potassium. . Min. 10% Plant Protein. . Max. 1%

STORAGE: Store at a room temperature below 30° C (86° F). BALANCE Stress & Dehydration Aid is not harmed by freezing. Close container between uses to prevent clumping.

DIRECTIONS FOR USE: Begin treating livestock one day prior to and during the entire stress period.

Water Administration:

- **Water medicator:** Administer BALANCE Stress & Dehydration Aid at 3 cups per 5 gallons of stock solution metered at 1 ounce to 128 gallons of drinking water.
- **Water tank:** Administer BALANCE Stress & Dehydration Aid at 3 cups per 640 gallons of water (each cup treats approximately 21,300 pounds of livestock or 213 gallons of drinking water).

Feed Administration:

Administer BALANCE Stress & Dehydration Aid by adding 1 gram per 3 lbs. of complete feed or 3 cups (780 grams) per ton of complete feed. (This will equate to 1.2 grams per 100 lbs. body weight per day.)

CLINICAL TRIAL

In a clinical trial, BALANCE Stress & Dehydration Aid increased water consumption and caused reduction in rectal temperature in pigs where the barn temperature and humidity were manipulated to extremes. Daytime barn temperatures averaged 105° F and humidity at 80% for 5 days.

- Results showed increased water consumption in the BALANCE group (1.0 gallons/40 lb pig/day) as compared to the non-treated control group (0.61 gallons/40 lb pig/day).
- There was a reduction in rectal temperature in the BALANCE group (average 103.1° F) as compared to the non-treated control group (average 103.6° F).

Treat a 40 lb pig for less than a penny a day!

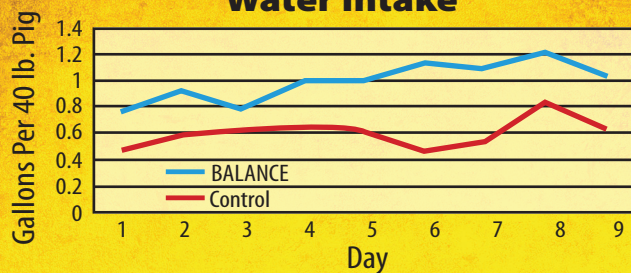
Mix 3 cups (780 grams) with 5 gallons of stock solution (meter 1:128).

Mix 3 cups with 640 gallons of water.

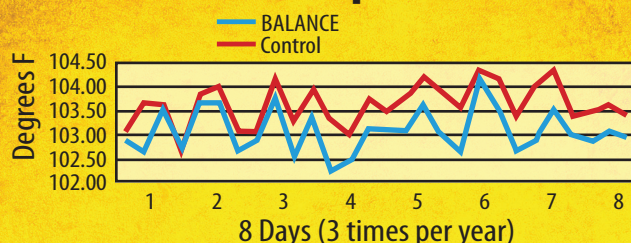


ss000039 03/2023

Water Intake



Rectal Temperatures



For questions, please call 888-215-1256

Aurora Pharmaceutical, Inc.
Northfield, MN 55057